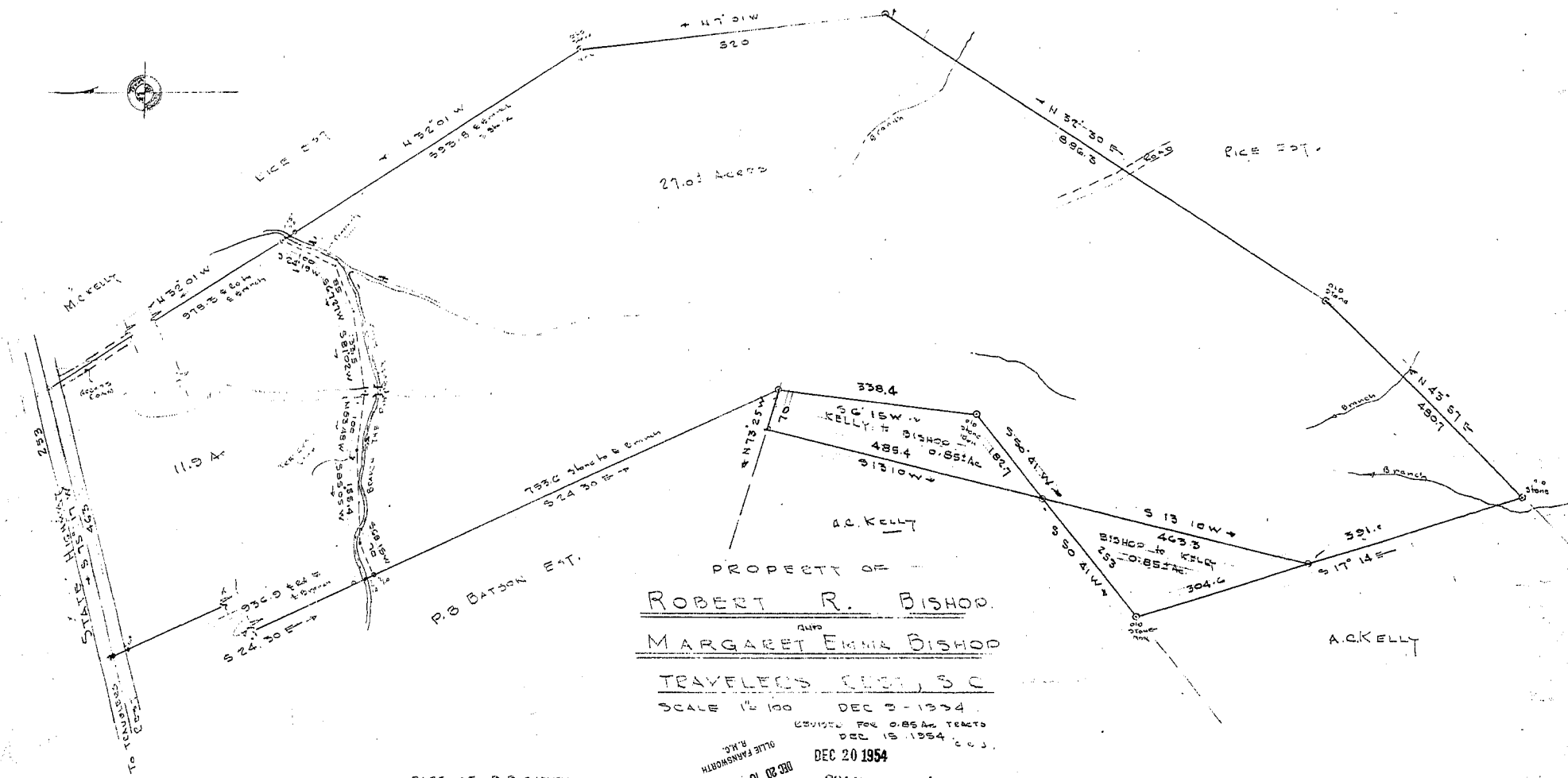


# Plat Book-GG-Page 73

10115



PROPERTY OF  
ROBERT R. BISHOP  
MARGARET EMMA BISHOP  
TRAVELER'S REST, S.C.  
 SCALE 1" = 100' DEC 3 - 1954

REVISED FOR 0.85 AC TRACTS  
 DEC 15 1954  
 DEC 20 1954  
 29215 200

PART OF T.D. JENSEN  
 BECAUSE HEREIN  
 See ENCO - DEED 84 419  
 P. 477

C. C. JONES  
 C. H. BISHOP  
 GREENVILLE, S.C.

10115 Filed This Day in Dec. 24  
 and Recorded in 1954  
 Register Marie Lowrey, Greenville County, S.C.